

Matsutec HAR-100 Dual Channel AIS Receiver With RS232/ RS422 , GPS receiver

Model : **HAR-100**

SPECIFICATIONS

Connectors: VHF antenna connector PL259 Female

GPS antenna connector TNC Female

Physical :

Dimension :

Weight :

Power : Input 10-35V DC

Power Consumption: 0.95W

Electrical Interface : RS232 and RS422 ,

Baud Rate : 38400 bps

NMEA sentence output : VDM , VDO , RMC, VTG, GGA, GSA, GSV, GLL.

AIS Characteristics

Frequency Rate : 156.025MHZ~ 162.25MHZ

AIS Channel 1: CH87B (161.975MHZ)

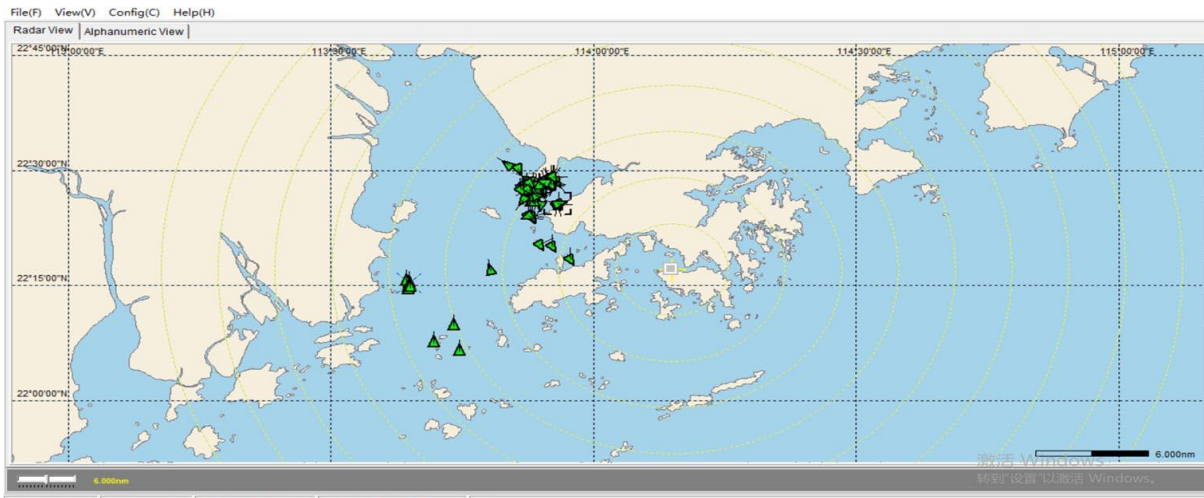
AIS Channel 2: CH88B (162.025MHZ)

2 LED indicators for receiver channel

Receiver performance:

1. Receive sensitivity: -118 dBm Packet Error Rate <5%
2. Intermodulation suppression 65dB
3. Adjacent channel selectivity >70dB





AIS Connected GPS Disconnect 2020/03/18 13:40:08 114°32'24"E, 22°20'54"N LOG.

File(F) View(V) Config(C) Help(H)
Radar View | Alphanumeric View |

NO	IMSI	CLASS	NAME	CALLSIGN	RANGE	BEARING	SOG	COG	HEADING	CPA	TCPA	LON	LAT	ROT	LENGTH	BEAM	DESTINATION	ETA	SHPTYPE	
30	413461990	[A]			17.44 nm	308.0°	0.00Kn	6.1°	289.0°	17.45 nm	0.0 min	113°54'35"E	22°28'15"N	0.0°	0m	0m	N/A	0/0 00:00	(0)Undefined ship	
31	412463857	[B]		90050	N/A	N/A	0.00Kn	0.0°	N/A	N/A	N/A	N/A	N/A	N/A	17m	6m	N/A	N/A	(30)Vessel-Fishing	
32	563250000	[A]			17.54 nm	304.1°	0.10Kn	224.0°	37.0°	N/A	N/A	113°53'41"E	22°27'22"N	0.0°	0m	0m	N/A	0/0 00:00	(0)Undefined ship	
33	413212480	[A]			17.51 nm	302.0°	11.20Kn	220.7°	229.0°	Pass	Pass	113°53'19"E	22°26'49"N	>5°/30s(R)	0m	0m	N/A	0/0 00:00	(0)Undefined ship	
34	413493630	[A]			17.46 nm	311.4°	0.00Kn	215.3°	N/A	N/A	N/A	113°55'20"E	22°29'03"N	N/A	0m	0m	N/A	0/0 00:00	(0)Undefined ship	
35	412538816	[B]	YUE-SUI-YU111	11132	N/A	N/A	0.00Kn	0.0°	N/A	N/A	N/A	N/A	N/A	N/A	14m	3m	N/A	N/A	(30)Vessel-Fishing	
36	412463863	[B]	YUEHUDONGYI	90080	16.84 nm	308.5°	7.90Kn	205.0°	205.0°	N/A	N/A	113°55'11"E	22°27'59"N	N/A	21m	7m	N/A	N/A	(30)Vessel-Fishing	
37	413474360	[B]			17.55 nm	302.7°	0.00Kn	205.3°	194.0°	N/A	N/A	113°53'24"E	22°27'00"N	N/A	0m	0m	N/A	N/A	(0)Undefined ship	
38	412475016	[B]	YUESHEYUYUN		17.39 nm	311.5°	0.00Kn	300.7°	N/A	N/A	N/A	113°55'24"E	22°29'02"N	N/A	0m	0m	N/A	N/A	(0)Undefined ship	
39	477537600	[A]			18.39 nm	292.4°	7.20Kn	206.2°	199.0°	Pass	Pass	113°50'50"E	22°24'29"N	0.0°	0m	0m	N/A	0/0 00:00	(0)Undefined ship	
40	412462621	[B]			17.27 nm	307.9°	7.40Kn	47.7°	N/A	N/A	17.13 nm	18.5 min	113°54'42"E	22°28'08"N	N/A	0m	0m	N/A	N/A	(0)Undefined ship
41	413837474	[A]			15.79 nm	295.3°	6.30Kn	332.0°	331.0°	N/A	N/A	113°53'47"E	22°24'11"N	0.0°	0m	0m	N/A	0/0 00:00	(0)Undefined ship	
42	412549059	[A]			17.32 nm	311.1°	0.00Kn	353.3°	N/A	N/A	N/A	113°55'23"E	22°28'53"N	N/A	0m	0m	N/A	0/0 00:00	(0)Undefined ship	
43	412468350	[A]			17.94 nm	305.6°	0.00Kn	357.2°	N/A	N/A	N/A	113°53'40"E	22°27'59"N	N/A	0m	0m	N/A	0/0 00:00	(0)Undefined ship	
44	413484890	[A]			17.41 nm	308.1°	0.10Kn	239.2°	293.0°	Pass	Pass	113°54'37"E	22°28'15"N	0.0°	0m	0m	N/A	0/0 00:00	(0)Undefined ship	
45	413484870	[B]	JUHUI6		16.81 nm	309.3°	0.00Kn	0.0°	N/A	N/A	N/A	113°55'23"E	22°28'09"N	N/A	0m	0m	N/A	N/A	(0)Undefined ship	
46	412463859	[B]			17.18 nm	310.3°	8.40Kn	357.2°	N/A	Pass	Pass	113°55'18"E	22°28'37"N	N/A	0m	0m	N/A	N/A	(0)Undefined ship	
47	412549062	[A]			17.31 nm	311.1°	0.00Kn	35.4°	N/A	N/A	N/A	113°55'23"E	22°28'53"N	N/A	0m	0m	N/A	0/0 00:00	(0)Undefined ship	
48	412535474	[B]	SHENSHE5198	5198	N/A	N/A	0.00Kn	0.0°	N/A	N/A	N/A	N/A	N/A	N/A	24m	7m	N/A	N/A	(30)Vessel-Fishing	
49	412461511	[B]	SHEN SHE 6573		17.42 nm	311.5°	0.00Kn	272.6°	272.0°	N/A	N/A	113°55'22"E	22°29'02"N	N/A	0m	0m	N/A	N/A	(0)Undefined ship	
50	412473950	[B]	JUHUI3		N/A	N/A	0.00Kn	0.0°	0.0°	N/A	N/A	N/A	N/A	N/A	0m	0m	N/A	N/A	(0)Undefined ship	
51	413471870	[A]			N/A	N/A	N/A	N/A	292.0°	N/A	N/A	N/A	N/A	0.0°	0m	0m	N/A	0/0 00:00	(0)Undefined ship	
52	412527976	[A]			N/A	N/A	0.00Kn	0.0°	N/A	N/A	N/A	N/A	N/A	N/A	0m	0m	N/A	N/A	(0)Undefined ship	
53	994776001	[AbsN]	CPV1		16.92 nm	299.1°	N/A	N/A	N/A	16.93 nm	0.0 min	113°53'19"E	22°25'44"N	N/A	0m	0m	N/A	N/A	N/A	

6.000nm

转到"设置"以激活 Windows.

AIS Connected GPS Disconnect 2020/03/18 14:12:05 113°19'39"E, 22°56'05"N LOG.